



Alberta's Rural Health
Professions Action Plan

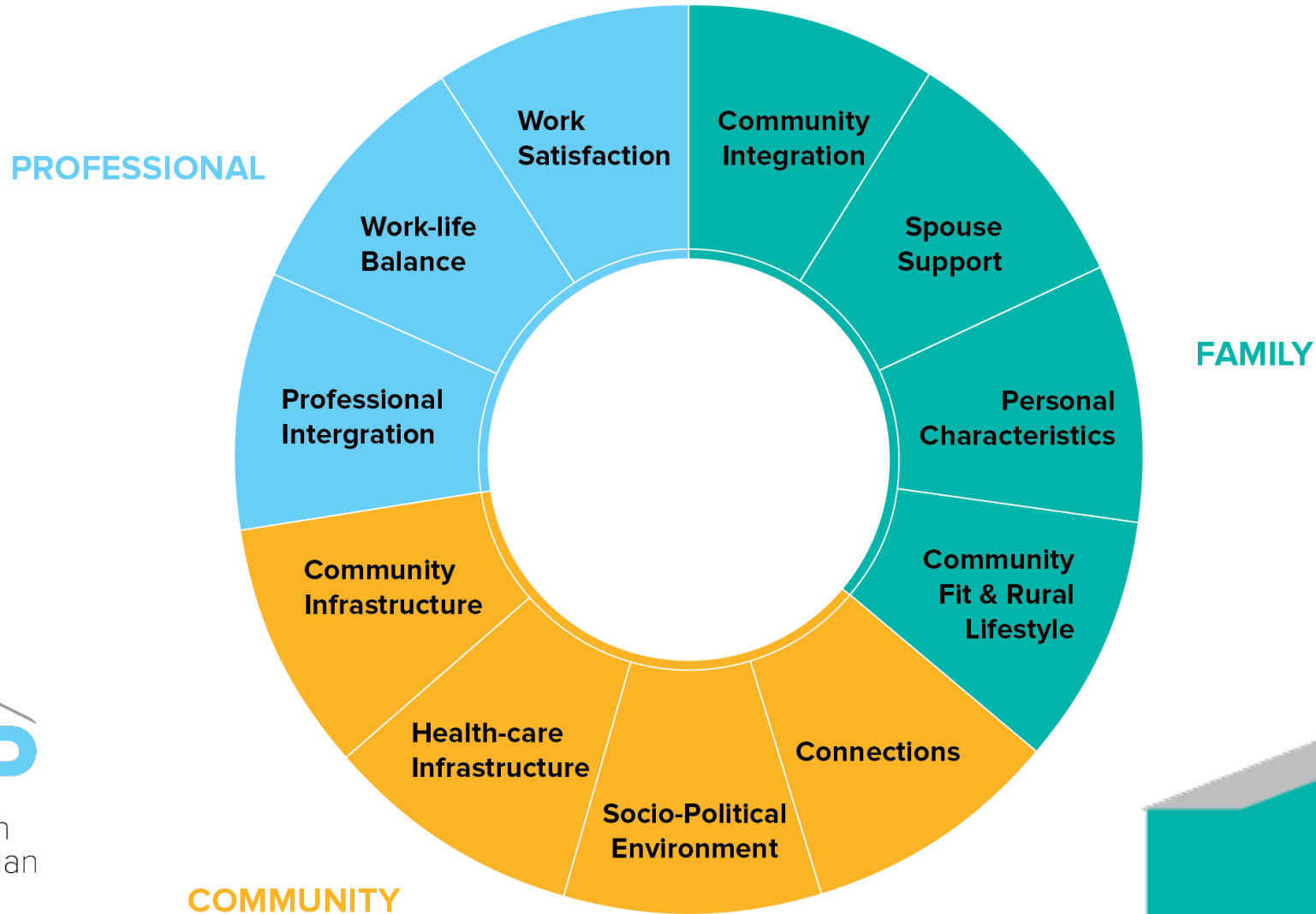
Building Community Capacity:

RhPAP's Rural Community
Development and Engagement
program

RMA March 19, 2019

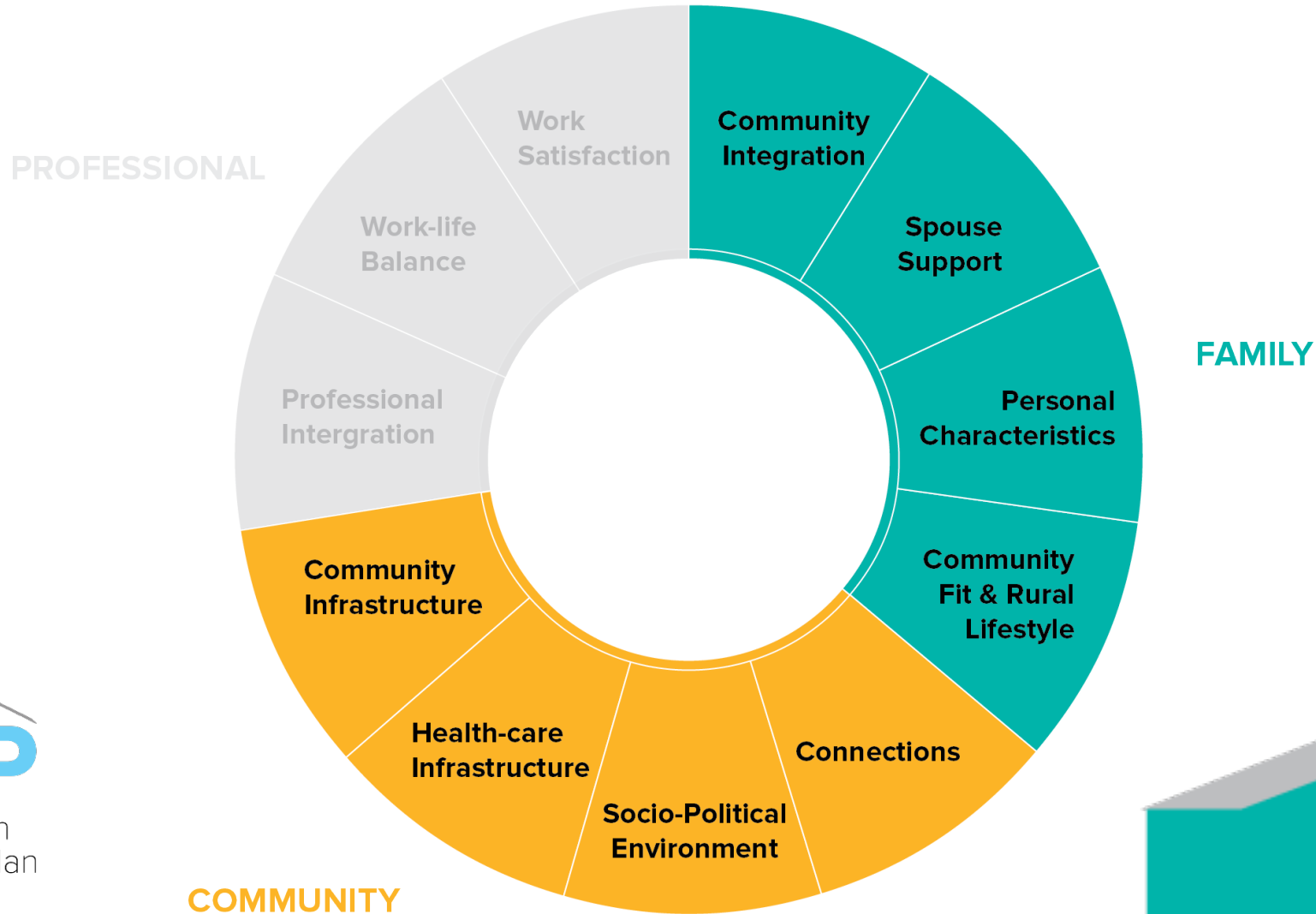
Building on Success:

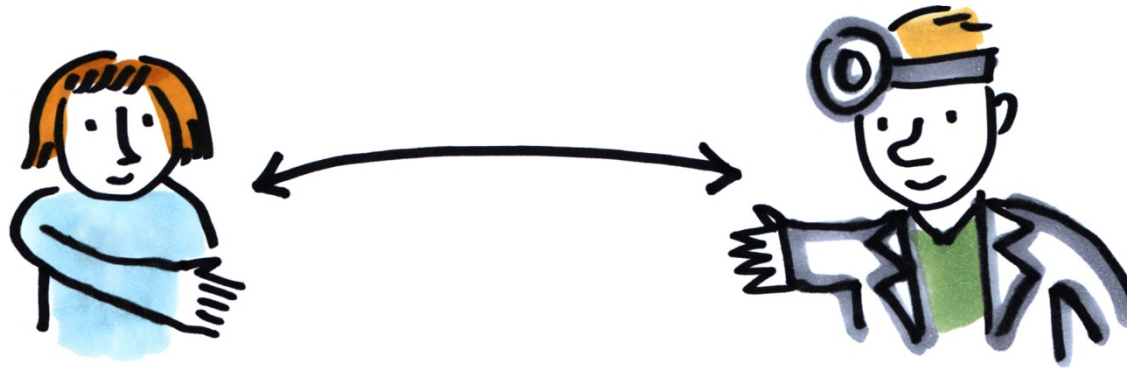
A study of Rural Alberta Communities' Success Strategies in Attracting and Retaining Health Care Professionals



Building on Success:

A study of Rural Alberta Communities' Success Strategies in Attracting and Retaining Health Care Professionals





Rural Community Attraction & Retention Support

WHAT WORKS?

The Attraction & Retention Continuum

Voices from the Community



Rural Community A&R Conference

- 10 years
- Networking, sharing experiences



Learning series

- Internet based
- Regional workshops

Foundational **Community Building**

- Introduction to Community Building
- Increasing Relevance and Importance of Being Community Driven
- Supporting Individual and Community Change
- Tools for Enhancing Community Leadership
- Outcome–Focused Leadership
- Measuring Impact: Evaluation Basics
- Essentials for Engaging and Empowering Citizens and Volunteers



Face to Face workshops

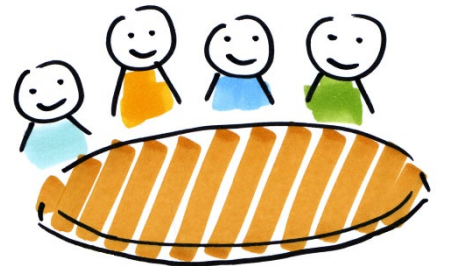
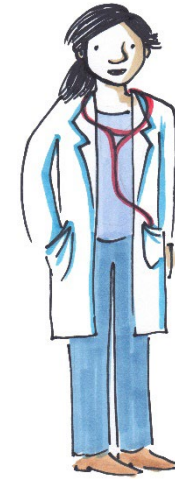
- Tools for Enhancing Community Leadership
- Outcome-Focused Leadership



RHPAP

Alberta's Rural Health Professions Action Plan Attraction & Retention Committee Toolkit

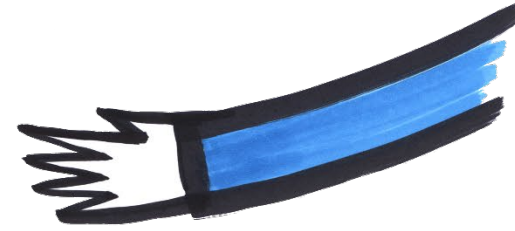
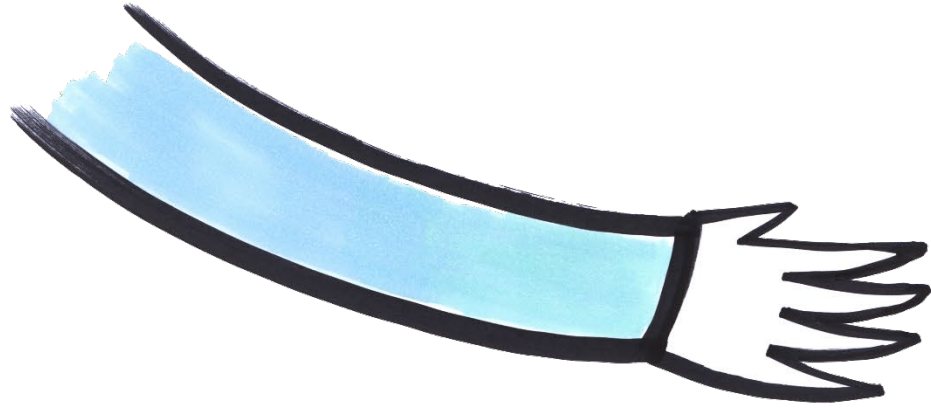
January 2019



Rural Community **A&R** Toolkit

- Orientation to Toolkit
- Module 1 – The Rural Alberta context
- Module 2 – A&R committees – new and existing
- Module 3 – Attraction to Rural Communities and Regions
- Module 4 – Attracting High School and Health Sciences Students to Rural Communities and Rural Practice
- Module 5 – Settling In and Retention





Rural Community

Collaboration and Partnership

- Alberta Health Services, Community Engagement
- CMHA, Alberta Division





Questions / **Discussion**

